

**the Royale Channel Hookup**

(All units are Open White)

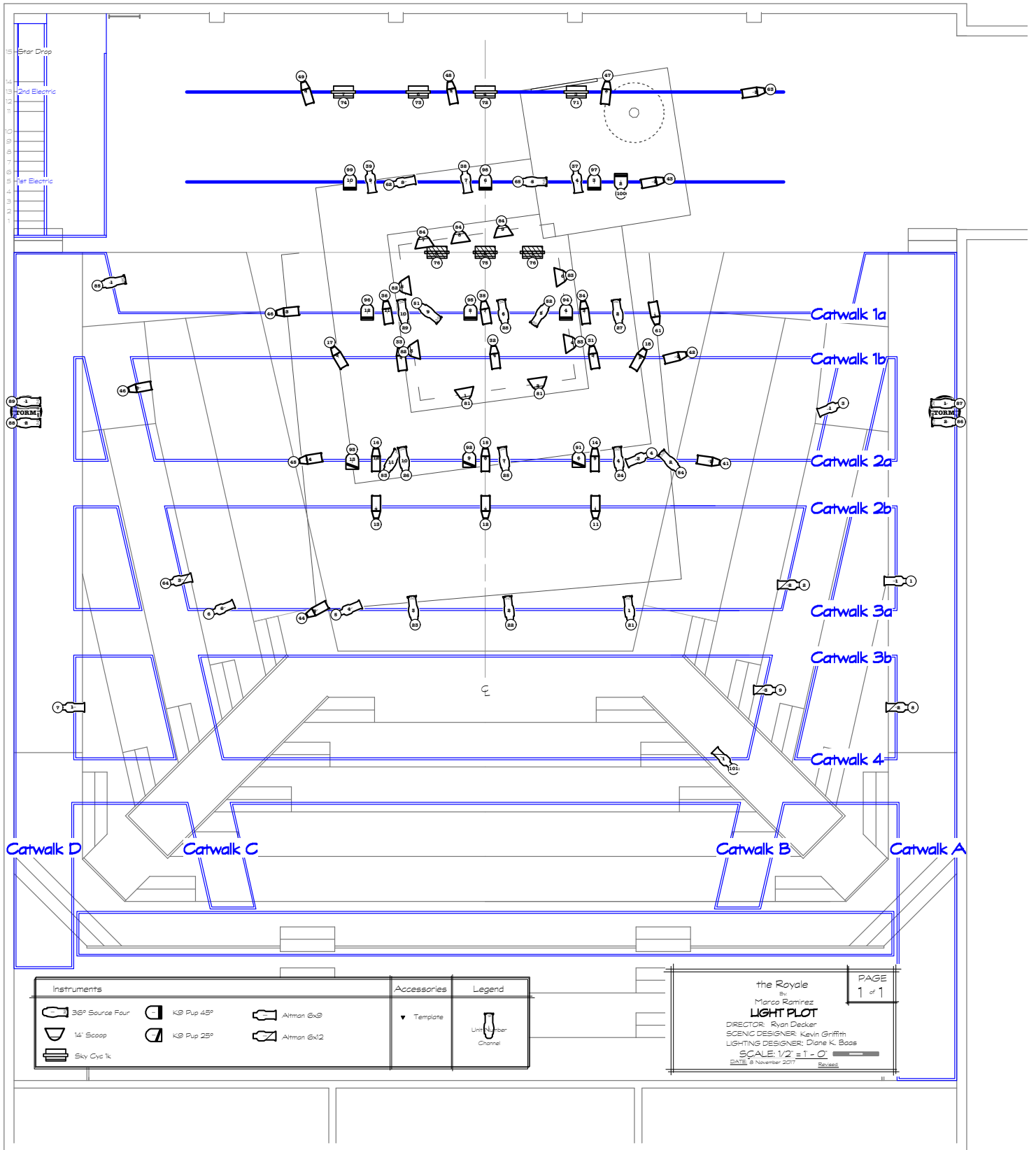
<b>Channel</b>	<b>Instrument</b>	<b>Watt</b>	<b>Purpose</b>	<b>Position</b>	<b>Unit #</b>
<b>1</b>	Altman 6x9	1kw	Hotel L Side	Catwalk A	1
<b>2</b>	Altman 6x12	1kw	Hotel L Side R	Catwalk B	2
<b>3</b>	Altman 6x9	1kw	Hotel L Side Bx	Catwalk B	1
<b>4</b>	Altman 6x9	1kw	Hotel L Side Bx R	Cat 2a	3
<b>5</b>	Altman 6x9	1kw	Hotel R Side	Cat 3	4
<b>6</b>	Altman 6x9	1kw	Hotel R Side R	Cat 3	6
<b>7</b>	Altman 6x9	1kw	Hotel R Fill	Catwalk D	1
<b>8</b>	Altman 6x12	1kw	Hotel DL Fill	Catwalk A	2
<b>9</b>	Altman 6x12	1kw	Hotel DR Fill	Catwalk B	3
<b>11</b>	40° Berkey	1kw	Locker room Top L	Cat 2b	1
<b>12</b>	40° Berkey	1kw	Locker room Top C	Cat 2b	2
<b>13</b>	40° Berkey	1kw	Locker room Top R	Cat 2b	3
<b>14</b>	40° Berkey	1kw	Hotel Top L	Cat 2a	5
<b>15</b>	40° Berkey	1kw	Hotel Top C	Cat 2a	8
<b>16</b>	40° Berkey	1kw	Hotel Top R	Cat 2a	12
<b>17</b>	40° Berkey	1kw	DL Vom	Cat 1b	6
<b>18</b>	40° Berkey	1kw	DR Vom	Cat 1b	2
<b>21</b>	36° Source Four	575w	Boxing Face DL	Cat 3	1

<b>22</b>	36° Source Four	575w	Boxing Face DC	Cat 3	2
<b>23</b>	36° Source Four	575w	Boxing Face DR	Cat 3	3
<b>24</b>	36° Source Four	575w	Boxing Face L	Cat 2a	4
<b>25</b>	36° Source Four	575w	Boxing Face C	Cat 2a	7
<b>26</b>	36° Source Four	575w	Boxing Face R	Cat 2a	10
<b>27</b>	36° Source Four	575w	Boxing Face UL	Cat 1a	2
<b>28</b>	36° Source Four	575w	Boxing Face UC	Cat 1a	6
<b>29</b>	36° Source Four	575w	Boxing Face UR	Cat 1a	10
<b>31</b>	40° Berkey	1kw	Boxing Bx DL	Cat 1b	3
<b>32</b>	40° Berkey	1kw	Boxing Bx DC	Cat 1b	4
<b>33</b>	40° Berkey	1kw	Boxing Bx DR	Cat 1b	5
<b>34</b>	40° Berkey	1kw	Boxing Bx L	Cat 1a	3
<b>35</b>	40° Berkey	1kw	Boxing Bx C	Cat 1a	7
<b>36</b>	40° Berkey	1kw	Boxing Bx R	Cat 1a	11
<b>37</b>	40° Berkey	1kw	Boxing Bx UL	1st Electric	4
<b>38</b>	40° Berkey	1kw	Boxing Bx UC	1st Electric	7
<b>39</b>	40° Berkey	1kw	Boxing Bx UR	1st Electric	9

<b>41</b>	40° Berkey	1kw	Boxing L Side DS	Cat 2a	1
<b>42</b>	40° Berkey	1kw	Boxing L Side MS	Cat 1b	1
<b>43</b>	40° Berkey	1kw	Boxing L Side US	1st Electric	1
<b>44</b>	40° Berkey	1kw	Boxing R Side DS	Cat 3	5
<b>45</b>	40° Berkey	1kw	Boxing R Side MS	Cat 2a	14
<b>46</b>	40° Berkey	1kw	Boxing R Side US	Catwalk C	2
46	40° Berkey	1kw	Boxing R Side USR	Cat 1a	13
<b>47</b>	40° Berkey	1kw	Boxing Lo Bx UL	2nd Electric	2
<b>48</b>	40° Berkey	1kw	Boxing Lo Bx UC	2nd Electric	5
<b>49</b>	40° Berkey	1kw	Boxing Lo Bx UR	2nd Electric	8
<b>51</b>	36° Source Four	575w	Boxing Corner DL	Cat 1a	9
<b>52</b>	36° Source Four	575w	Boxing Corner DR	Cat 1a	5
<b>53</b>	36° Source Four	575w	Boxing Corner UL	Cat 2a	11
<b>54</b>	36° Source Four	575w	Boxing Corner UR	Cat 2a	2
<b>61</b>	40° Berkey	1kw	Bag Platform Front	Cat 1a	1
<b>62</b>	Altman 6x9	1kw	Bag Plat SR Side	1st Electric	8
<b>63</b>	40° Berkey	1kw	Bag Plat SL Bx	2nd Electric	1
<b>64</b>	Altman 6x12	1kw	Bag Plat R Fill	Catwalk C	3

<b>65</b>	36° Source Four	575w	Bag Plat top	1st Electric	5
<b>71</b>	3 Cell Sky Cyc Center	1kw	Blinder Wash L	2nd Electric	3
<b>72</b>	3 Cell Sky Cyc Center	1kw	Blinder Wash LC	2nd Electric	4
<b>73</b>	3 Cell Sky Cyc Center	1kw	Blinder Wash RC	2nd Electric	6
<b>74</b>	3 Cell Sky Cyc Center	1kw	Blinder Wash RC	2nd Electric	7
<b>75</b>	3 Cell Sky Cyc Center	1kw	Under Wash C	Under Ring	2
<b>76</b>	3 Cell Sky Cyc Center	1kw	Under Wash R	Under Ring	3
76	3 Cell Sky Cyc Center	1kw	Under Wash L	Under Ring	1
<b>81</b>	14" Scoop	300w	Practicals US	Ring Truss	2
81	14" Scoop	300w	Practicals US	Ring Truss	1
81	14" Scoop	300w	Practicals US	Ring Truss	7
<b>82</b>	14" Scoop	300w	Practicals DS	Ring Truss	5
82	14" Scoop	300w	Practicals DS	Ring Truss	3
<b>83</b>	14" Scoop	300w	Practicals L	Ring Truss	6
83	14" Scoop	300w	Practicals L	Ring Truss	4
<b>84</b>	14" Scoop	300w	Practicals R	Ring Truss	9
84	14" Scoop	300w	Practicals R	Ring Truss	8
<b>85</b>	36° Source Four	575w	UR Tableau Pool	Catwalk C	1
<b>86</b>	36° Source Four	575w	SL Lo Side DS	HR Torm	2
<b>87</b>	36° Source Four	575w	SL Lo Side US	HR Torm	1

<b>88</b>	36° Source Four	575w	SR Lo Side DS	HL Torm	2
<b>89</b>	36° Source Four	575w	SR Lo Side US	HL Torm	1
<b>91</b>	K9 Pup 25°		Pup DL	Cat 2a	6
<b>92</b>	K9 Pup 25°		Pup DC	Cat 2a	9
<b>93</b>	K9 Pup 25°		Pup DR	Cat 2a	13
<b>94</b>	K9 Pup 45°		Pup L	Cat 1a	4
<b>95</b>	K9 Pup 45°		Pup C	Cat 1a	8
<b>96</b>	K9 Pup 45°		Pup R	Cat 1a	12
<b>97</b>	K9 Pup 45°		Pup UL	1st Electric	3
<b>98</b>	K9 Pup 45°		Pup UC	1st Electric	6
<b>99</b>	K9 Pup 45°		Pup UR	1st Electric	10
<b>100</b>	K9 Pup 45°		Pup Bag Plat	1st Electric	2
<b>101</b>	6x12	1k	DL Song Special	Cat 4	1
<b>200</b>	HOUSE		HOUSE	HOUSE	
<b>300</b>	Pup Power		Pup Power	2nd Electric	



Instruments	Accessories	Legend
36° Source Four	K9 Pup 45°	Altman 6x8
14' Scoop	K9 Pup 25°	Altman 6x12
Sky Cyc 1x	Template	Unit Number Channel

the Royale  
by  
Marco Ramirez  
**LIGHT PLOT**  
DIRECTOR: Ryan Decker  
SCENIC DESIGNER: Kevin Griffith  
LIGHTING DESIGNER: Diane K. Boos  
SCALE: 1/2" = 1'-0"  
DATE: 8 November 2017

PAGE  
1 of 1

Revised