

GYPSY CHANNEL HOOKUP

DKBaas 8.3.2017

Channel	Dimmer	Instrument Type	Purpose	Color	Position	Unit #
1	16	19° Source Four	DL Front	R54	FOH Upper	1
2	13	19° Source Four	DCL Front	R54	FOH Upper	3
3	11	19° Source Four	DC Front	R54	FOH Upper	5
4	6	19° Source Four	DCR Front	R54	FOH Upper	7
5	2	19° Source Four	DR Front	R54	FOH Upper	10
6	15	19° Source Four	L Front	R54	FOH Lower	1
7	12	19° Source Four	CL Front	R54	FOH Lower	2
8	10	19° Source Four	C Front	R54	FOH Lower	3
9	5	19° Source Four	CR Front	R54	FOH Lower	4
10	4	19° Source Four	R Front	R54	FOH Lower	5
21	84	S4 PAR WFL	DL Wm Bx	R2002	2nd Electric	5
22	66	S4 PAR WFL	DC Wm Bx	R2002	2nd Electric	8
	66	S4 PAR WFL	DC Wm Bx	R2002	2nd Electric	13
23	62	S4 PAR WFL	DR Wm Bx	R2002	2nd Electric	16
24	98	S4 PAR WFL	UL Wm Bx	R2002	4th Electric	4
25	79	S4 PAR WFL	UC Wm Bx	R2002	4th Electric	7
26	88	S4 PAR WFL	UR Wm Bx	R2002	4th Electric	11
31	68	S4 PAR WFL	DL N Bx	R55	2nd Electric	6
32	64	S4 PAR WFL	DC N Bx	R55	2nd Electric	9
	64	S4 PAR WFL	DC N Bx	R55	2nd Electric	14
33	61	S4 PAR WFL	DR N Bx	R55	2nd Electric	17
34	80	S4 PAR WFL	US N Bx	R55	4th Electric	5
	80	S4 PAR WFL	US N Bx	R55	4th Electric	12
	80	S4 PAR WFL	US N Bx	R55	4th Electric	9
41	67	S4 PAR WFL	DL Cool Bx	R78	2nd Electric	7
42	63	S4 PAR WFL	DC Cool Bx	R78	2nd Electric	10
	63	S4 PAR WFL	DC Cool Bx	R78	2nd Electric	15
43	56	S4 PAR WFL	DR Cool Bx	R78	2nd Electric	18
44	97	S4 PAR WFL	UL Cool Bx	R78	4th Electric	6
45	78	S4 PAR WFL	UC Cool Bx	R78	4th Electric	10
46	86	S4 PAR WFL	UR Cool Bx	R78	4th Electric	13
51	31	6" Fresnel	Pass Top W L	R321	Apron Pipe	1
52	32	6" Fresnel	Pass Top W C	R321	Apron Pipe	5
53	19	6" Fresnel	Pass Top W C	R321	Apron Pipe	10
54	21	6" Fresnel	Pass Top W R	R321	Apron Pipe	14

55	30	6" Fresnel	Pass Top C L	L200	Apron Pipe	2
56	28	6" Fresnel	Pass Top C C	L200	Apron Pipe	6
57	20	6" Fresnel	Pass Top C C	L200	Apron Pipe	11
58	23	6" Fresnel	Pass Top C R	L200	Apron Pipe	15
61	59	6" Fresnel	MS Drops C Wm	R318	3rd Electric	6
62	72	6" Fresnel	MS Drops Wm	R318	3rd Electric	12
	72	6" Fresnel	MS DropsWm	R318	3rd Electric	2
63	58	6" Fresnel	MS Drops C N	R355	3rd Electric	8
64	71	6" Fresnel	MS Drops N	R355	3rd Electric	13
	71	6" Fresnel	MS Drops N	R355	3rd Electric	3
65	57	6" Fresnel	MS Drops C Cool	L200	3rd Electric	9
66	70	6" Fresnel	MS Drops Cool	L200	3rd Electric	14
	70	6" Fresnel	MS Drops Cool	L200	3rd Electric	4
67	91	14" Scoop	Cyc 1	R80	Cyc E	7
	91	14" Scoop	Cyc 1	R80	Cyc E	10
	95	14" Scoop	Cyc 1	R80	Cyc E	4
	95	14" Scoop	Cyc 1	R80	Cyc E	1
68	90	14" Scoop	Cyc 2	R91	Cyc E	8
	90	14" Scoop	Cyc 2	R91	Cyc E	11
	94	14" Scoop	Cyc 2	R91	Cyc E	5
	94	14" Scoop	Cyc 2	R91	Cyc E	2
69	89	14" Scoop	Cyc 3	R26	Cyc E	9
	89	14" Scoop	Cyc 3	R26	Cyc E	12
	93	14" Scoop	Cyc 3	R26	Cyc E	6
	93	14" Scoop	Cyc 3	R26	Cyc E	3
71	35	36° Source Four	SL Side W DS	R35	HR Box Boom	6
72	33	26° Source Four	SL Side W DS	R35	HR Box Boom	1
73	52	36° Source Four	SL Side W DS	R35	1st Electric	1
74	81	36° Source Four	SL Side W MS	R35	2nd Electric	1
75	100	36° Source Four	SL Side W US	R35	4th Electric	1

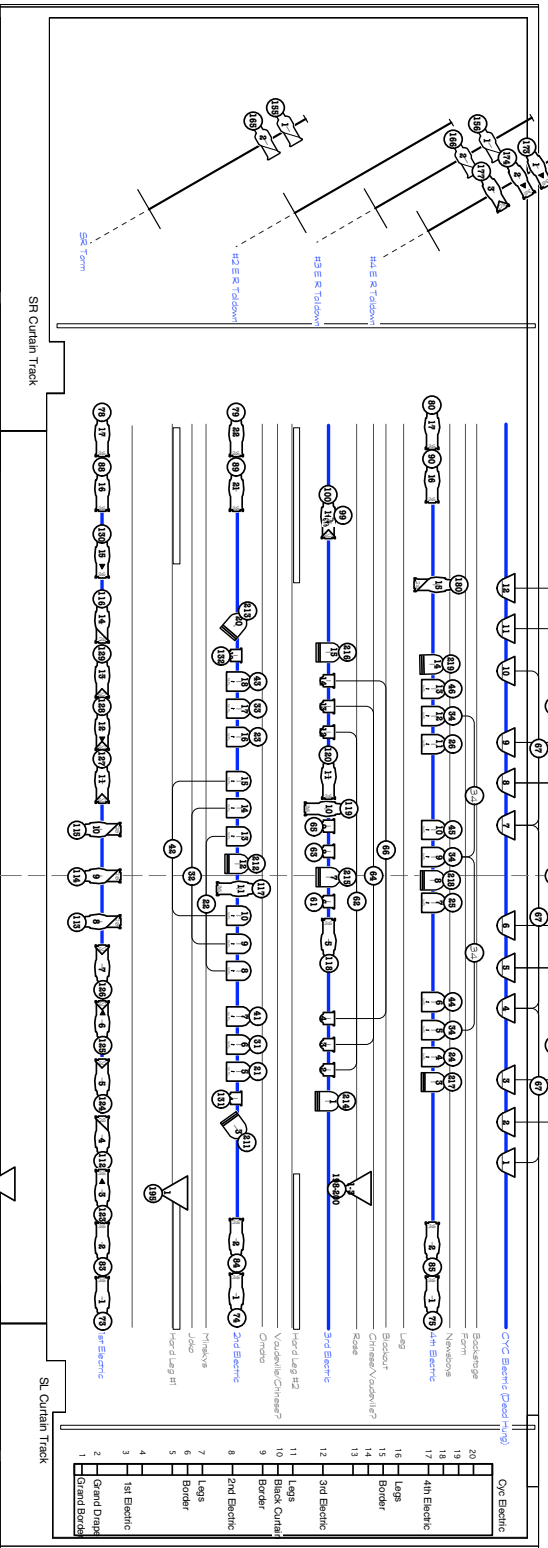
76	24	26° Source Four	SR Side W DS	R35	HL Box Boom	2
77	132	36° Source Four	SR Side W DS	R35	HL Box Boom	6
78	37	36° Source Four	SR Side W DS	R35	1st Electric	17
79	54	36° Source Four	SR Side W MS	R35	2nd Electric	22
80	85	36° Source Four	SR Side W US	R35	4th Electric	17
81	36	36° Source Four	SL Side C DS	L201	HR Box Boom	7
82	104	26° Source Four	SL Side C DS	L201	HR Box Boom	2
83	51	36° Source Four	SL Side C DS	L201	1st Electric	2
84	82	36° Source Four	SL Side C MS	L201	2nd Electric	2
85	99	36° Source Four	SL Side C US	L201	4th Electric	2
86	25	26° Source Four	SR Side C DS	L201	HL Box Boom	1
87	134	36° Source Four	SR Side C DS	L201	HL Box Boom	7
88	42	36° Source Four	SR Side C DS	L201	1st Electric	16
89	55	36° Source Four	SR Side C MS	L201	2nd Electric	21
90	87	36° Source Four	SR Side C US	L201	4th Electric	16
99	142	Film FX	Film FX	Streaky Clouds	ch 100	
100	141	26° Source Four	Traveling Special/FX	N/C	3rd Electric	16
101	1	19° Source Four	Placards	N/C	FOH Upper	9
	1	19° Source Four	Placards	N/C	FOH Upper	2
102	14	19° Source Four	L Special	N/C	FOH Upper	4
103	8	19° Source Four	DC Special	N/C	FOH Upper	6
104	3	19° Source Four	DR Special	N/C	FOH Upper	8
106	29	50° Source Four	SL Spec	N/C	Apron Pipe	4

107	27	36° Source Four	DCL Spec	N/C	Apron Pipe	7
108	17	36° Source Four	Courtroom Gobo	N/C	Apron Pipe	8
109	18	36° Source Four	Courtroom Gobo	N/C	Apron Pipe	9
110	148	36° Source Four	DCR Spec	N/C	Apron Pipe	12
112	49	26° Source Four	Spec	N/C	1st Electric	4
113	45	26° Source Four	Spec	N/C	1st Electric	8
114	44	26° Source Four	Spec	N/C	1st Electric	9
115	43	26° Source Four	Spec	N/C	1st Electric	10
116	38	26° Source Four	Spec	N/C	1st Electric	14
117	65	36° Source Four	Spec	L201	2nd Electric	11
118	60	36° Source Four	Spec	N/C	3rd Electric	5
119	107	50° Source Four	Spec	N/C	3rd Electric	10
120	69	36° Source Four	Spec	N/C	3rd Electric	11
123	47	36° Source Four	Construction D	N/C	1st Electric	3
124	50	50° Source Four	W X	R05	1st Electric	5
125	48	50° Source Four	Small Breakup	N/C	1st Electric	6
126	46	50° Source Four	C X	R362	1st Electric	7
127	40	50° Source Four	C X	R362	1st Electric	11
128	39	50° Source Four	Small Breakup	N/C	1st Electric	12
129	41	50° Source Four	W X	R05	1st Electric	13
130	103	36° Source Four	Construction D	N/C	1st Electric	15

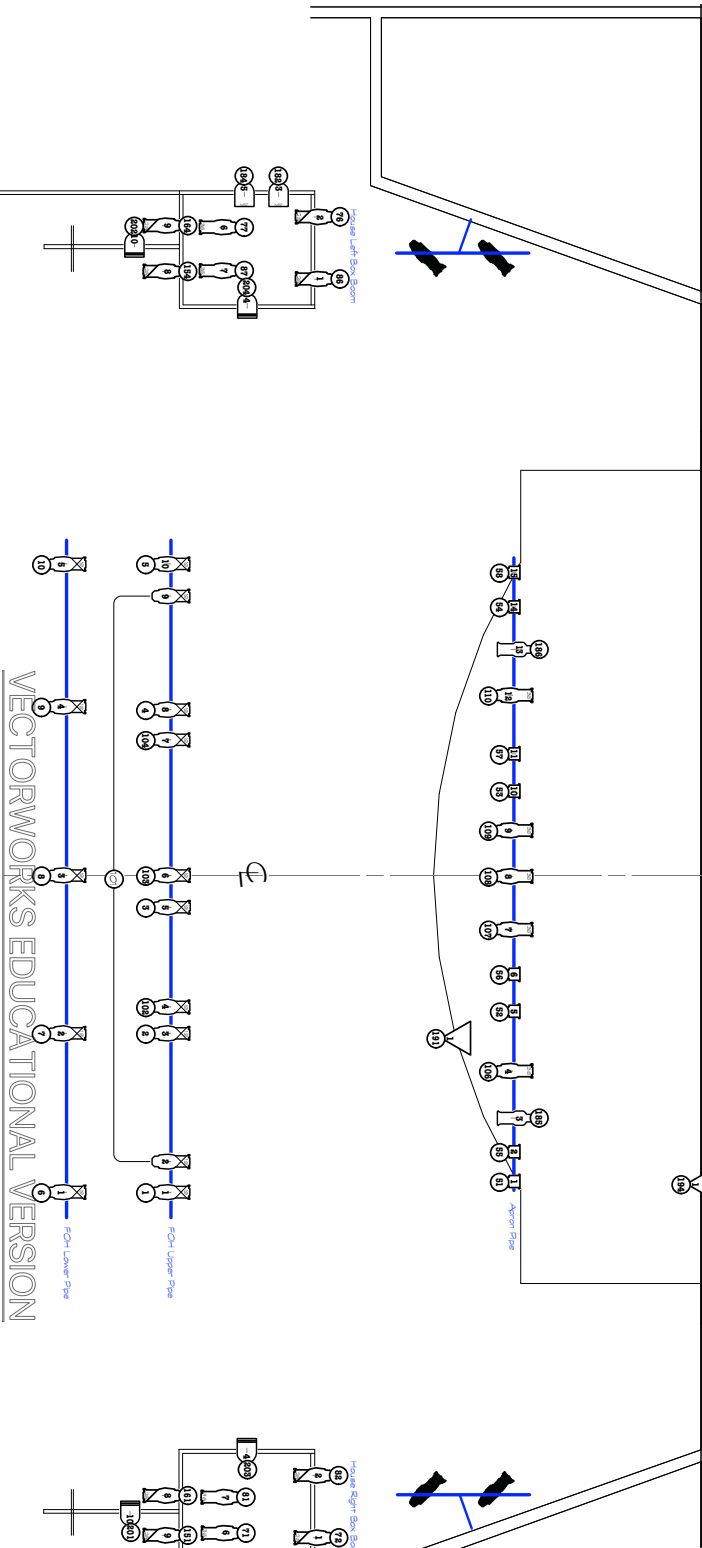
131	83	6" Fresnel	SL Top	N/C	2nd Electric	4
132	53	6" Fresnel	SR/Hotel	N/C	2nd Electric	19
151	147	26° Source Four	Lo Side W	R34	HR Box Boom	9
152	138	6x12	Lo Side W	R34	SL Torm	1
153	112	6x12	Lo Side W	R34	#3 E Taildown	1
154	133	26° Source Four	Lo Side W R	R34	HL Box Boom	8
155	105	6x12	Lo Side W R	R34	SR Torm	1
156	111	6x12	Lo Side W R	R34	#3 E R Taildown	1
161	34	26° Source Four	Lo Side C	R355	HR Box Boom	8
162	137	6x12	Lo Side C	R355	SL Torm	2
163	108	6x12	Lo Side C	R355	#3 E Taildown	2
164	26	26° Source Four	Lo Side C R	R355	HL Box Boom	9
165	129	6x12	Lo Side C R	R355	SR Torm	2
166	109	6x12	Lo Side C R	R355	#3 E R Taildown	2
171	114	36° Source Four	Ship Rigging	N/C	#4 E Taildown	1
172	116	36° Source Four	Ship Rigging	N/C	#4 E Taildown	2
173	113	36° Source Four	Backstage Gobo	N/C	#4 E R Taildown	1
174	115	36° Source Four	Backstage Gobo	N/C	#4 E R Taildown	2
175	110	36° Source Four	Window	R87	#3 E Taildown	3
176	150	50° Source Four	Linear City	N/C	#4 E Taildown	3
177	143	50° Source Four	Abstract Skyline	N/C	#4 E R Taildown	3
180	77	26° Source Four	SR Window	R87	4th Electric	15
181	136	S4 PAR NSP	Pass Side W	R33	HR Box Boom	3
182	130	S4 PAR NSP	Pass Side W	R33	HL Box Boom	3

183	135	S4 PAR NSP	Pass Side C	R355	HR Box Boom	5
184	131	S4 PAR NSP	Pass Side C	R355	HL Box Boom	5
185	149	6x9	Aisle	N/C	Apron Pipe	3
186	22	6x9	Aisle	N/C	Apron Pipe	13
191	139		Pass Chase		Pass	1
194	140		Foots			1
195	106		Hard Leg Chase		#1 Hard Leg	1
198	73		ROSE 1		Rose Sign	1
199	74		ROSE 2		Rose Sign	2
200	75		ROSE 3		Rose Sign	3
201	2/210	Bulldog			HR Box Boom	10
202	2/311	Bulldog			HL Box Boom	10
203	2/301	Bulldog			HR Box Boom	4
204	2/220	Bulldog			HL Box Boom	4
211	321-328	Bulldog			2nd Electric	3
212	421-428	Bulldog			2nd Electric	12
213	351-358	Bulldog			2nd Electric	20
214	371-378	Bulldog			3rd Electric	1
215	331-338	Bulldog			3rd Electric	7
216	341-348	Bulldog			3rd Electric	15
217	361- 368	Bulldog			4th Electric	3
218	431-438	Bulldog			4th Electric	8
219	391- 398	Bulldog			4th Electric	14

VECTORWORKS EDUCATIONAL VERSION



Lighting Fixtures	Accessories
50° Source Four	Tempare
1x Strip	Tempare from FX
3x PAR WFL	Legend
3x Source Four	Unit
K9 Bulb	Panel
6' Panel	Panel
2x Source Four	Panel
SL PAR NSP	Panel
Anton GN2	Panel
Anton G6	Panel
1st Source Four	Panel



GYPSY
LIGHT PLOT
 DESIGNER: Michael Haskew
 SCENIC DESIGNER: David Roper
 LIGHTING DESIGNER: Diane K. Boas
 SCALE: 1/2" = 1' - 0"
 DATE: 24 JAN 2007

VECTORWORKS EDUCATIONAL VERSION