

Nutcracker 2016 Channel Hookup

Channel	Dimmer	Instrument Type	Wattage	Purpose	Color	Position
1	1	Phoenix 19	750	Warm Front DR		#2 Catwalk
2	6	Phoenix 19	750	Warm Front DCR		#2 Catwalk
3	11	Phoenix 19	750	Warm Front DC		#2 Catwalk
4	16	Phoenix 19	750	Warm Front DCL		#2 Catwalk
5	20	Phoenix 19	750	Warm Front DL		#2 Catwalk
6	27	Phoenix 19	750	Warm Front R		#1 Catwalk
7	31	Phoenix 19	750	Warm Front CR		#1 Catwalk
8	35	Phoenix 19	750	Warm Front C		#1 Catwalk
9	40	Phoenix 19	750	Warm Front CL		#1 Catwalk
10	44	Phoenix 19	750	Warm Front L		#1 Catwalk
11	2	Phoenix 19	750	Warm Front UR		#2 Catwalk
12	5	Phoenix 19	750	Warm Front UCR		#2 Catwalk
13	8	Phoenix 19	750	Warm Front UC		#2 Catwalk
14	17	Phoenix 19	750	Warm Front UCL		#2 Catwalk
15	21	Phoenix 19	750	Warm Front UL		#2 Catwalk
16	72	Phoenix 19	750	Warm Wash L		Balcony Rail
17	70	Phoenix 19	750	Warm Wash CL		Balcony Rail
18	67	Phoenix 19	750	Warm Wash C		Balcony Rail
19	64	Phoenix 19	750	Warm Wash CR		Balcony Rail
20	61	Phoenix 19	750	Warm Wash R		Balcony Rail
21	3	Phoenix 19	750	Cool Front DR		#2 Catwalk
22	9	Phoenix 19	750	Cool Front DCR		#2 Catwalk
23	14	Phoenix 19	750	Cool Front DC		#2 Catwalk
24	18	Phoenix 19	750	Cool Front DCL		#2 Catwalk
25	22	Phoenix 19	750	Cool Front DL		#2 Catwalk
26	29	Phoenix 19	750	Cool Front R		#1 Catwalk
27	33	Phoenix 19	750	Cool Front CR		#1 Catwalk
28	38	Phoenix 19	750	Cool Front C		#1 Catwalk
29	42	Phoenix 19	750	Cool Front CL		#1 Catwalk
30	45	Phoenix 19	750	Cool Front L		#1 Catwalk
31	4	Phoenix 19	750	Cool Front UR		#2 Catwalk
32	7	Phoenix 19	750	Cool Front UCR		#2 Catwalk
33	15	Phoenix 19	750	Cool Front UC		#2 Catwalk
34	19	Phoenix 19	750	Cool Front UCL		#2 Catwalk

35	23	Phoenix 19	750	Cool Front UL		#2 Catwalk
36	71	Phoenix 19	750	Cool Wash L		Balcony Rail
37	69	Phoenix 19	750	Cool Wash CL		Balcony Rail
38	66	Phoenix 19	750	Cool Wash C		Balcony Rail
39	63	Phoenix 19	750	Cool Wash CR		Balcony Rail
40	62	Phoenix 19	750	Cool Wash R		Balcony Rail
41	155	Phoenix 36	750	DR Special		#1 Electric
42	152	Phoenix 36	750	Special		#1 Electric
43	142	Phoenix 36	750	CC Special		#1 Electric
44	144	Phoenix 36	750	Special		#1 Electric
45	133	Phoenix 36	750	DL Special		#1 Electric
46	226	Phoenix 36	750	Special		#2 Electric
47	224	Phoenix 36	750	UR Special		#2 Electric
48	189	Phoenix 36	750	CC Special Bx		#2 Electric
49	192	Phoenix 36	750	UL Special		#2 Electric
50	181	Phoenix 36	750	Special		#2 Electric
51	299	Phoenix 36	750	Special		#3 Electric
52	296	Phoenix 36	750	special		#3 Electric
53	233	Phoenix 36	750	special		#3 Electric
54	230	Phoenix 36	750	special		#3 Electric
55	215	Phoenix 36	750	special		#3 Electric
56	53	Phoenix 36	750	special		AntePro
57	54	Phoenix 36	750	special		AntePro
58	55	Phoenix 36	750	special		AntePro
59	56	Phoenix 36	750	special		AntePro
60	49	Phoenix 36	750	Throne Special DL		AntePro
61	147, 4/1-3	Star Par MFL	575W	DR Bx 1	MXR	#1 Electric
62	151, 4/4-6	Star Par MFL	575W	DCR Bx 1	MXR	#1 Electric
63	156, 4/7-9	Star Par MFL	575W	DC Bx 1	MXR	#1 Electric
64	143, 4/10-12	Star Par MFL	575W	DCL Bx 1	MXR	#1 Electric
65	135, 4/13-15	Star Par MFL	575W	DL Bx 1	MXR	#1 Electric
66	195, 4/16-18	Star Par MFL	575W	R Bx 1	MXR	#2 Electric
67	223, 4/19-21	Star Par MFL	575W	CR Bx 1	MXR	#2 Electric
68	228, 4/22-24	Star Par MFL	575W	C Bx 1	MXR	#2 Electric
69	190, 4/25-27	Star Par MFL	575W	CL Bx 1	MXR	#2 Electric
70	184, 4/28-30	Star Par MFL	575W	L Bx 1	MXR	#2 Electric
71	298, 4/31-33	Star Par MFL	575W	UR Bx 1	MXR	#3 Electric
72	297, 4/34-36	Star Par MFL	575W	UCR Bx 1	MXR	#3 Electric
73	232, 4/37-39	Star Par MFL	575W	UC Bx 1	MXR	#3 Electric
74	231, 4/40-42	Star Par MFL	575W	UCL Bx 1	MXR	#3 Electric
75	214, 4/43-45	Star Par MFL	575W	UL Bx 1	MXR	#3 Electric

81	154, 4/46-48	Star Par MFL	575W	DR Bx 2	MXR	#1 Electric
82	153, 4/49-51	Star Par MFL	575W	DCR Bx 2	MXR	#1 Electric
83	141, 4/52-54	Star Par MFL	575W	DC Bx 2	MXR	#1 Electric
84	136, 4/55-57	Star Par MFL	575W	DCL Bx 2	MXR	#1 Electric
85	134, 4/58-60	Star Par MFL	575W	DL Bx 2	MXR	#1 Electric
86	196, 4/61-63	Star Par MFL	575W	R Bx 2	MXR	#2 Electric
87	227, 4/64-66	Star Par MFL	575W	CR Bx 2	MXR	#2 Electric
88	191, 4/67-69	Star Par MFL	575W	C Bx 2	MXR	#2 Electric
89	183, 4/70-72	Star Par MFL	575W	CL Bx 2	MXR	#2 Electric
90	182,4/73-75	Star Par MFL	575W	L Bx 2	MXR	#2 Electric
91	300	Star Par MFL	575W	UR Bx 2	N/C	#3 Electric
92	295	Star Par MFL	575W	UCR Bx 2	N/C	#3 Electric
93	234	Star Par MFL	575W	UC Bx 2	N/C	#3 Electric
94	229	Star Par MFL	575W	UCL Bx 2	N/C	#3 Electric
95	216	Star Par MFL	575W	UL Bx 2	N/C	#3 Electric
101	150, 4/251-253	Phoenix 26	750	Hi Side	MXR	#1 Electric
102	138, 4/254-256	Phoenix 26	750	Hi Side	MXR	#1 Electric
103	149, 4/257-259	Phoenix 26	750	Hi Side	MXR	#1 Electric
104	137, 4/260-262	Phoenix 26	750	Hi Side	MXR	#1 Electric
105	198, 4/263-265	Phoenix 26	750	Hi Side	MXR	#2 Electric
106	185, 4/266-268	Phoenix 26	750	Hi Side	MXR	#2 Electric
107	197, 2/269-271	Phoenix 26	750	Hi Side	MXR	#2 Electric
108	186, 4/272-274	Phoenix 26	750	Hi Side	MXR	#2 Electric
109	466, 4/275-277	Phoenix 26	750	Hi Side	MXR	#3 Electric
110	212, 4/278-280	Phoenix 26	750	Hi Side	MXR	#3 Electric
111	467, 4/281-283	Phoenix 26	750	Hi Side	MXR	#3 Electric
112	213, 4/284-286	Phoenix 26	750	Hi Side	MXR	#3 Electric
121	60	Shakespeare 30 55	600W	c		HL Box Boom
122	52	Shakespeare 30 55	600W	c		HR Box Boom
123	59	Shakespeare 15 30	600W	w		HL Box Boom
124	47	Shakespeare 15 30	600W	w		HR Box Boom
125	57	Shakespeare 30 55	600W	c		HL Box Boom
126	51	Shakespeare 30 55	600W	c		HR Box Boom
127	58	Shakespeare 15 30	600W	w		HL Box Boom

128	50	Shakespeare 15 30	600W	w		HR Box Boom
129	25	Phoenix 36	750	Curtain Warmer		HL Box Boom
130	48	Phoenix 36	750	Curtain Warmer		HR Box Boom
151	235	Cyc		Blue Cyc		#4 Electric
	240	cyc				#4 Electric
	243	cyc				#4 Electric
	246	cyc				#4 Electric
	249	cyc				#4 Electric
	252	cyc				#4 Electric
	261	cyc				#4 Electric
152	236	cyc		Green Cyc		#4 Electric
	239	cyc				#4 Electric
	242	cyc				#4 Electric
	245	cyc				#4 Electric
	248	cyc				#4 Electric
	251	cyc				#4 Electric
	260	cyc				#4 Electric
153	237	cyc		Red Cyc		#4 Electric
	238	cyc				#4 Electric
	241	cyc				#4 Electric
	244	cyc				#4 Electric
	247	cyc				#4 Electric
	250	cyc				#4 Electric
	259	cyc				#4 Electric
161	68	Phoenix 26	750			Balcony Rail
162	65	Phoenix 26	750	LOGO GOBO		Balcony Rail
163	10	Phoenix 26	750			#2 Catwalk
164	12	Phoenix 26	750			#2 Catwalk
165	36	Phoenix 26	750			#1 Catwalk
166	37	Phoenix 26	750			#1 Catwalk
170				Cross-over Strips		
171				Clock		
172				Tree		
173				Big Lil Tree		
174				Big Tree 1		
175				Big Tree 2		
210						

211					SL Boom #1
212					SL Boom #2
213					SL Boom #3
214					SR Boom #1
215					SR Boom #2
216					SR Boom #3
221					SL Boom #1
222					SL Boom #2
223					SL Boom #3
224					SR Boom #1
225					SR Boom #2
226					SR Boom #3
231		Phoenix 26	750		SL Boom #1
232		Phoenix 26	750		SL Boom #2
233		Phoenix 26	750		SL Boom #3
234		Phoenix 26	750		SR Boom #1
235		Phoenix 26	750		SR Boom #2
236		Phoenix 26	750		SR Boom #3
239		Phoenix 26	750		SL Boom #1
240		Phoenix 26	750		SR Boom #1
241					SL Rover
242					SR Rover
243					SL Rover
244					SR Rover

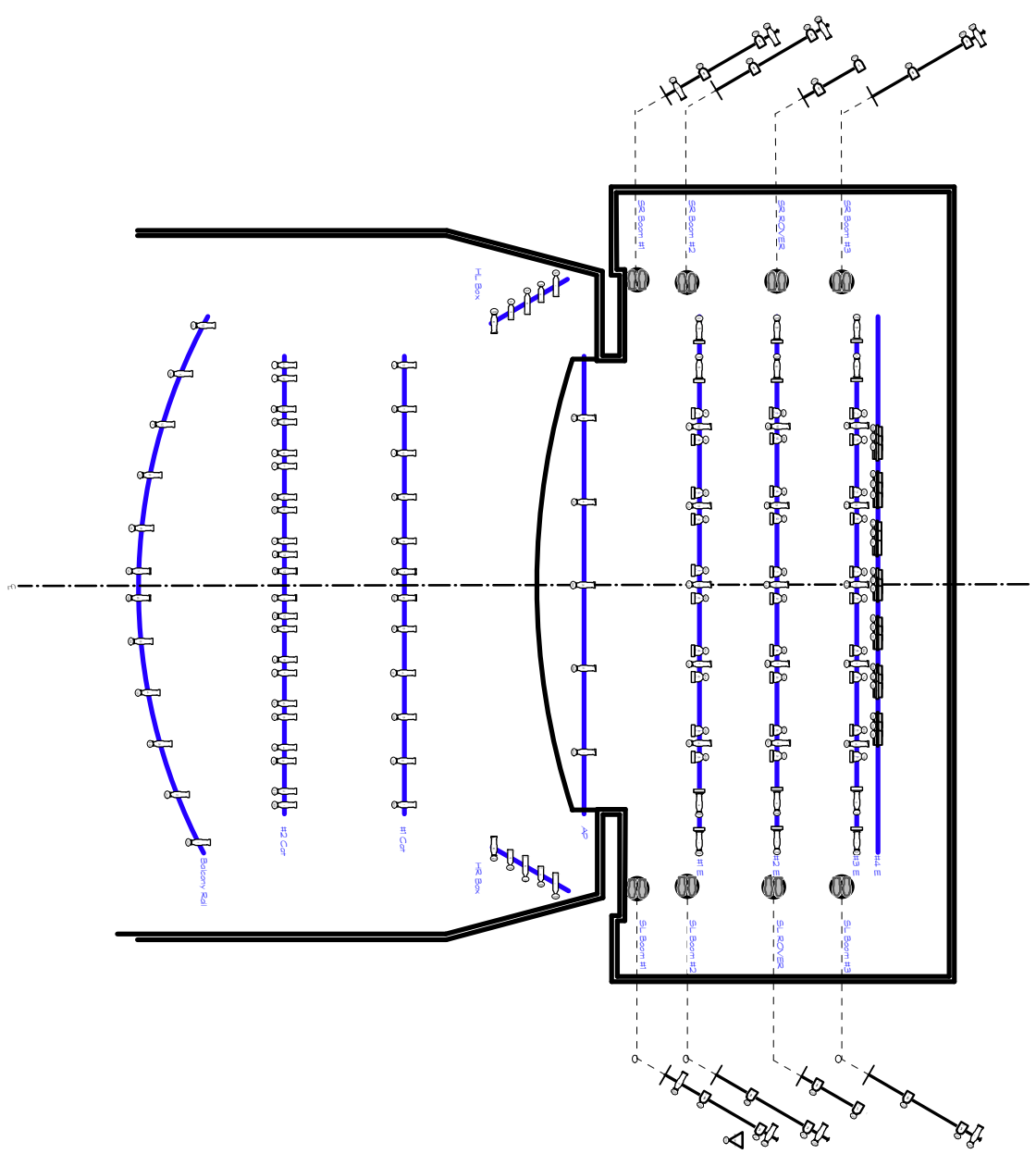
Unit Number
22
18
14
8
4
12
10
8
4
2
21
17
13
7
3
12
10
8
4
2
20
16
10
6
2
11
9
5
3
1
19
15
9
5

1
11
9
5
3
1
16
13
10
7
4
16
13
10
7
4
16
13
10
7
4
5
4
3
2
1
15
12
9
6
3
15
12
9
6
3
15
12
9
6
3

17
14
11
8
5
17
14
11
8
5
17
14
11
8
5
19
1
18
2
19
1
18
2
19
1
18
2
4
4
3
3
2
2
1

1
5
5
7
4
1
19
10
13
16
8
5
2
20
11
14
17
9
6
3
18
21
12
15
7
6
12
11
7
6
1
2
3
4
5
pup power

2
2
2
2
2
2
3
3
3
3
3
3
1
1
1
1
1
1
4
4
1
1
2
2



NOTES:
 ~Actual Boom Placement TBD in the space
 ~Hang Heights for Booms depend on available pipe lengths.
 Discuss with LD
 - See latest Lineset Schedule for #3 and #4 Es
 - Channels for Practicals are forthcoming, based on scenery

<p>the NUTCRACKER A CHRISTMAS CAROL by E.T. Seltzer Directed by [Name] Produced by [Name] Written by [Name]</p>	<p>Light Rider A LIGHTING DESIGN COMPANY 1234 Main Street Anytown, CA 90210 Phone: (555) 123-4567 Email: info@lightrider.com</p>
--	---